

VULKOLLAN® WINKEL-Rollen | VULKOLLAN® WINKEL Bearings
POLYAMID WINKEL-Rollen | POLYAMIDE WINKEL Bearings

SPEED + SILENT Profile
SPEED + FORCE Profile

WINKEL-Profile in kaltgewalzter Ausführung, nicht gekantet

Vorteile:

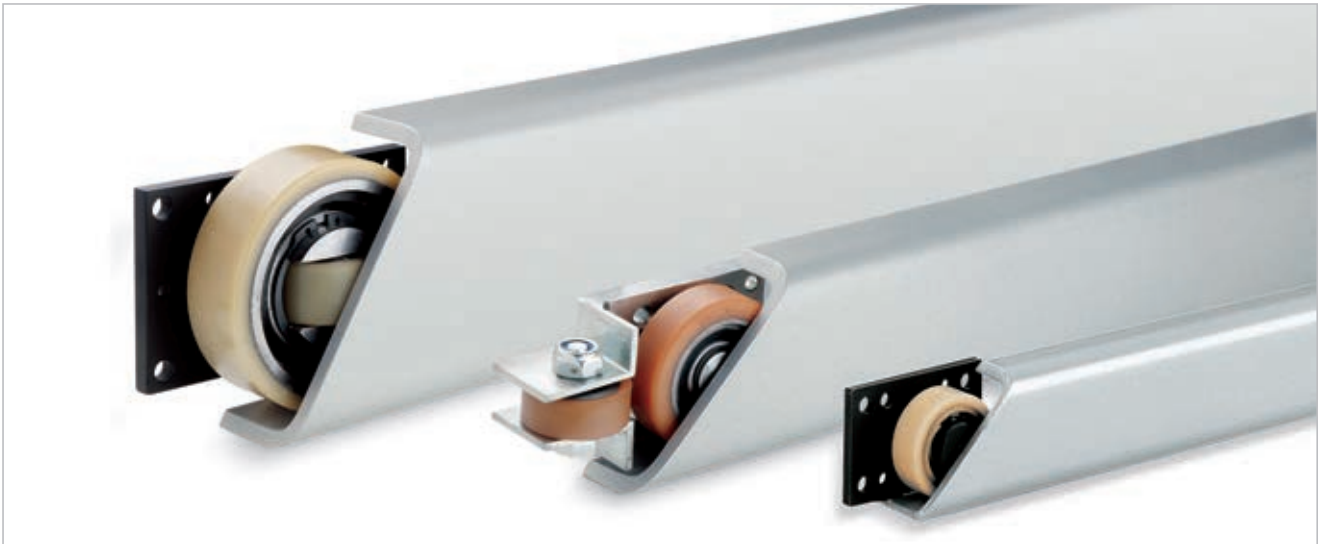
- Höhere Fertigungsgenauigkeit
- Kanten entgratet
- Maximale Lieferlänge 12 m
- Alle Profile aus hochwertigem Stahl in S235 JR
- Oberfläche blank
- Alle Profile in Fixlängen sofort ab Lager lieferbar
- Komplette Profilbearbeitung nach Kundenzeichnung möglich

 CAD Download in 2D/3D unter www.winkel.de
SPEED + SILENT profiles
SPEED + FORCE profiles

WINKEL profiles in cold rolled version, not bended

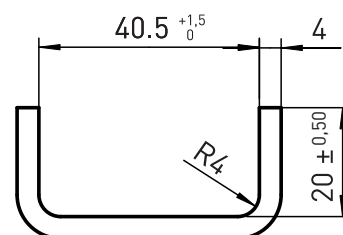
Advantages:

- Higher manufacturing precision
- Edges deburred
- Max. delivery length 12 m
- All profiles are made from high-quality steel in UNI FE 360 B
- Surface finished
- All profiles in fixed lengths, immediately from stock
- Machined profiles according customers drawing on request

 CAD download in 2D/3D at www.winkel.de

Standard A

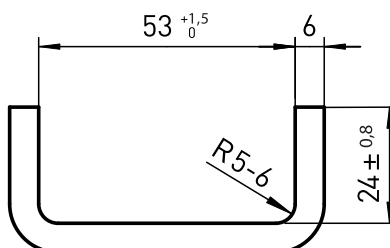
 Artikel-Nr. 113.001.000
 Article no.

m	2,62 kg/m
A	3,3 cm ²
I _x	10,6 cm ⁴
W _x	4,4 cm ³
I _y	1,7 cm ⁴
W _y	1,0 cm ³
e _y	0,8 cm


 $L_{\max} = 12 \text{ m}$
Standard S

 Artikel-Nr. 113.002.000
 Article no.

m	5,3 kg/m
A	6,4 cm ²
I _x	35,4 cm ⁴
W _x	10,9 cm ³
I _y	5,0 cm ⁴
W _y	2,5 cm ³
e _y	1,0 cm

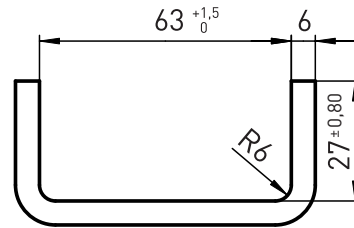

 $L_{\max} = 12 \text{ m}$



Standard M

Artikel-Nr. 113.007.000
Article no.

m	5,8	kg/m
A	7,3	cm ²
I _x	54,4	cm ⁴
W _x	14,5	cm ³
I _y	6,9	cm ⁴
W _y	3,1	cm ³
e _y	1,0	cm

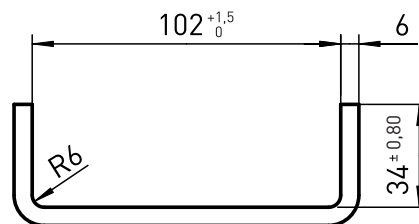


$L_{\max} = 12 \text{ m}$

Standard V

Artikel-Nr. 113.003.000
Article no.

m	8,3	kg/m
A	10,5	cm ²
I _x	178,7	cm ⁴
W _x	31,4	cm ³
I _y	14,0	cm ⁴
W _y	4,8	cm ³
e _y	1,1	cm

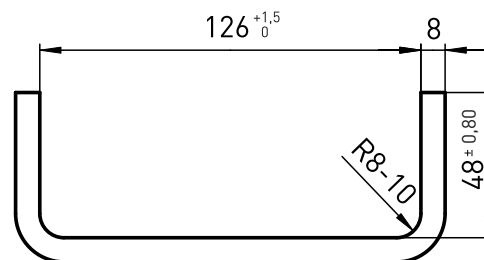


$L_{\max} = 12 \text{ m}$

Standard R

Artikel-Nr. 113.006.000
Article no.

m	14,3	kg/m
A	18,3	cm ²
I _x	499,7	cm ⁴
W _x	70,4	cm ³
I _y	49,8	cm ⁴
W _y	12,4	cm ³
e _y	1,6	cm

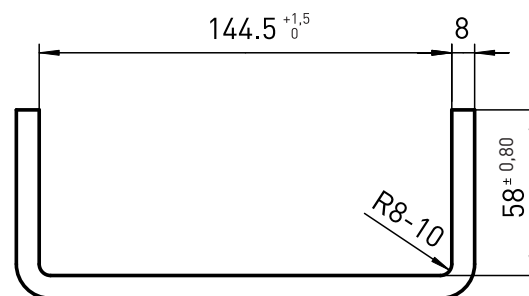


$L_{\max} = 12 \text{ m}$

Standard W

Artikel-Nr. 113.004.000
Article no.

m	16,9	kg/m
A	21,3	cm ²
I _x	758,9	cm ⁴
W _x	94,9	cm ³
I _y	83,0	cm ⁴
W _y	17,5	cm ³
e _y	1,9	cm

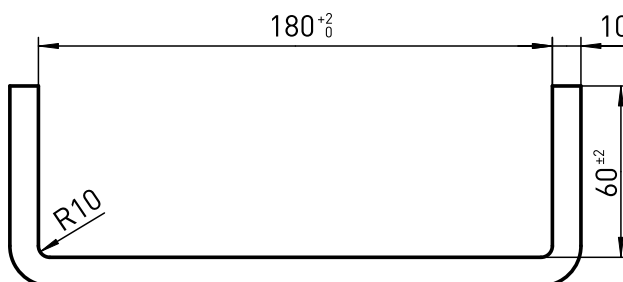


$L_{\max} = 12 \text{ m}$

Standard X

Artikel-Nr. 113.005.000
Article no.

m	24,1	kg/m
A	30,7	cm ²
I _x	1626,8	cm ⁴
W _x	162,7	cm ³
I _y	126,1	cm ⁴
W _y	24,6	cm ³
e _y	1,9	cm



$L_{\max} = 6 \text{ m}$

Ausführung: gekantet

Version: bended